


S1C

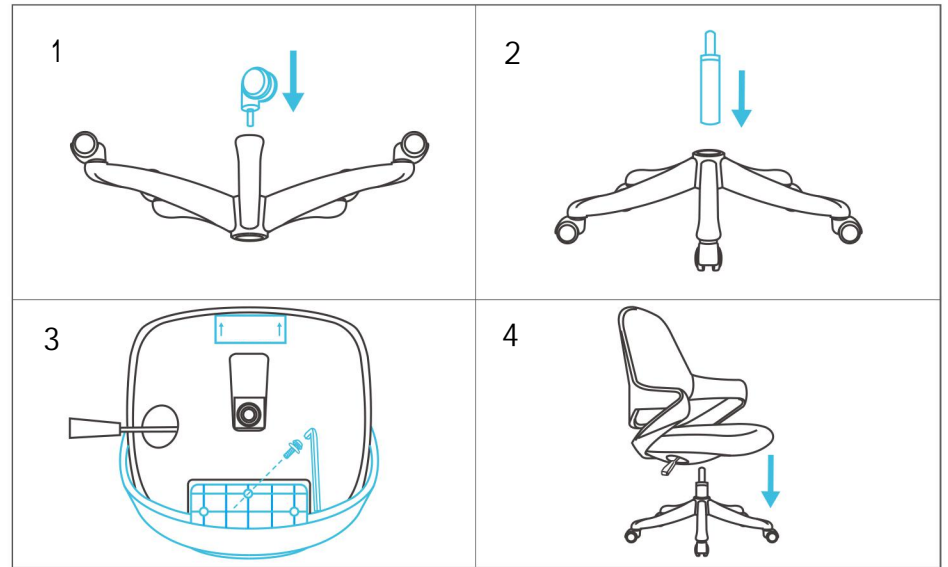
**PRODUCT
INSTALLATION
GUIDE**




Turn the handle to adjust the height of the chair








Product Size 61.5*66*87(95.5)CM

 **Installation diagram** (subject to actual size)



1. Press the caster into the base
2. Put the gas lift into the middle hole of the base
3. Use three M6*40 backrest screws and gaskets to install the backrest onto the seat cushion
4. Align the upper part of the assembled chair with the gas lift , the installation is finished

 **Accessories list** (subject to actual size, each type of screw has extra for spare, unit: piece/set)

 Caster *5	 Base*1	 Gas lift*1	 Backrest*1
 Seat cushion*1	 Hex wrench*1	 Backrest screw (M6*40)*3+1	<p>Tip: Before installing the chair, please sort the screws and measure the length of the screws for installation.</p>